

QUICK GUIDE SOUL

START-UP

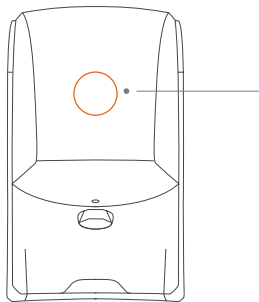
- Plug the machine into the mains.
- Press the button on the front for 1" to switch the juicer on until a fixed white light appears.



SQUEEZING

- To extract juice just press the front button. You will see that the colour of the button will automatically change from white to orange.

OBSERVE THE LIGHT ON THE BUTTON AND THE SOUND OF THE MACHINE



WHITE

the machine is ready to extract juice.



FLASHING WHITE

check if the waste container is badly fitted, the front door open, or there is an external element blocking the system.



ORANGE

the machine is extracting juice correctly.



FLASHING ORANGE

the machine is extracting juice and the waste container needs to be emptied.



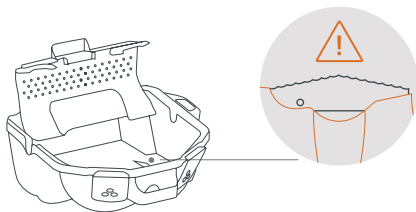
The machine will warn you with a sound/beep when the waste container is full and needs emptying.

OFF

• To switch your machine off, press the button on the front for 2", or directly unplug the machine from mains. *If the machine does not detect oranges, it will stop approximately 20" after the last orange has passed through.*

PRECAUTIONS

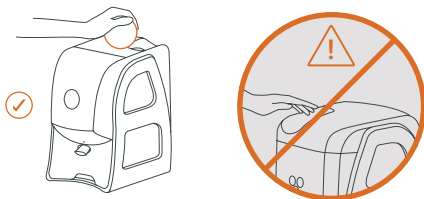
! Be very careful with the cutting elements, to avoid possible accidents.



Warning!

Be careful with the blade when removing the pressing unit and shafts.

! Never operate the machine from one side or from the rear. You must always load the feeder from the front of the machine.



Important!

Never try to access the extraction area from the feeder with your hand, to avoid possible accidents.